

FRANKENTOY

What makes a creature beautiful, or horrible to look at? How does that affect the way you feel about the creature? In this activity, you will design a creature from parts you choose!

MATERIALS

Collect these materials:

1. Catalogs, flyers, any throw-away print materials with nice big, colorful pictures of dolls, stuffed or real animals, robots, or anything that might have an interesting body part
2. Scissors
3. A sheet of heavy paper or cardboard to attach your creature to
4. Tape or glue for connecting the parts together



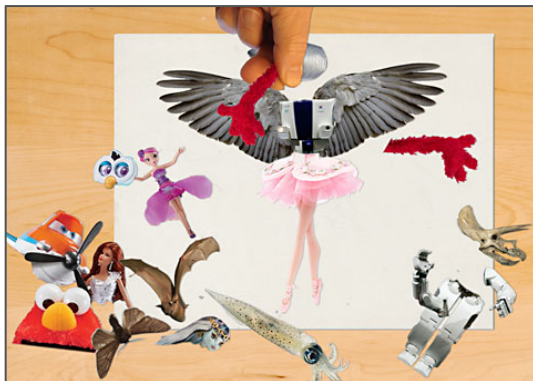
RECIPE



1. Cut out interesting body parts from your source materials. Make a big assortment of parts to work with.



2. Find a good head, or maybe a torso. Then add limbs and other parts. How many legs will it have? How many heads?



3. Arrange the parts in a way to show your figure in action. Is it running? Attacking? Singing a song?



4. Preserve your Frankentoy's pose. Tape or glue it down on a piece of paper. Or take a picture of it (be sure to send it to us), then disassemble and try another one.

Frankenstein200 puts players in the middle of the action in a story where Mary Shelley's classic tale collides with modern science. Learn more, and see more hands-on activities like this one at WWW.FRANKENSTEIN200.ORG